



APPLICATION & ASSEMBLY INSTRUCTION

NAC3MX-W-TOP | powerCON® TRUE1® TOP

A APPLICATION INSTRUCTION

Application other equipment:

- The powerCON® TRUE1® system is certified as a connector with breaking capacity according IEC 60320, VDE 0625.
- It is intended for use as an appliance coupler and interconnection coupler.
- It serves to supply power to an appliance and from an appliance to other equipment.
- To be installed by qualified person only.

CONNECTOR ASSIGNMENT:

APPLIANCE INLET

NAC3MPX-TOP
NAC3MPX-WOT-TOP

Power IN ▶



NAC3FX-W-TOP
(Connector)

APPLIANCE OUTLET

NAC3FPX-TOP
NAC3FPX-WOT-TOP
NAC3FPX-ST-TOP

Power OUT ◀



NAC3MX-W-TOP
(Plug connector)

APPLIANCE INLET / OUTLET

▶ Combination

NAC3PX-TOP

Power IN ▶



NAC3MX-W-TOP
(Plug connector)

Power OUT ◀

powerCON® TRUE1® TOP line is full backward compatible with the preceding powerCON TRUE1 products.

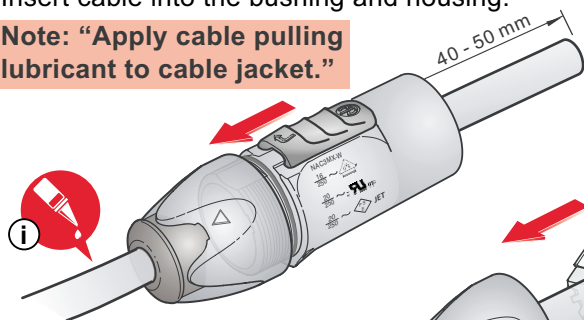
Approval based:	VDE EN 60320-1	UL 60320-1 CAN/CSA-C22.2 No. 60320-1
Rating:	250 V ac / 16 A	250 V ac / 20 A
Cable Type:	H05VV-F3G 1.0 mm ² , Length max. 2 m H05VV-F3G 1.5 - 2.5 mm ² H07RN-F3G 1.5 mm ²	SJTOW, SJOOW 3 x 12 AWG
Cable O.D.:	6.0 - 12.0 mm	6.0 - 12.0 mm

- The manufacturer of cord sets and of interconnection cord sets is responsible for the conformity assessment according to the applicable regulatory documents.

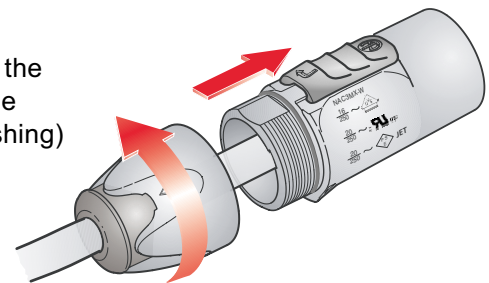
B ASSEMBLY INFORMATION

- Ⓐ Insert cable into the bushing and housing.

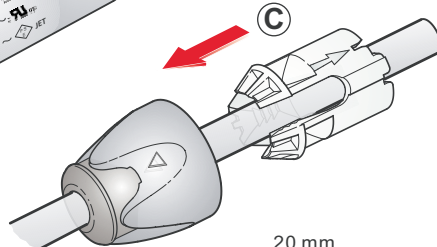
Note: "Apply cable pulling lubricant to cable jacket."



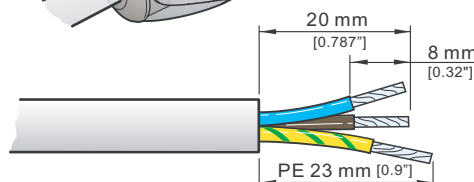
- Ⓑ Separate the housing from the bushing (cable remain in bushing)



- Ⓒ Place chuck over the cable.

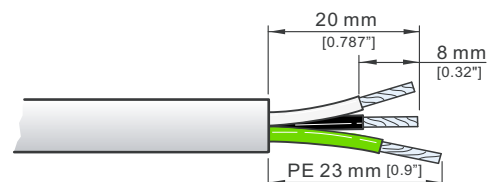


- Ⓓ Prepare cable as shown.



■ VDE
EN 60320-1

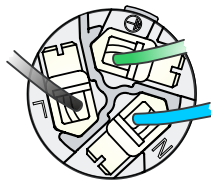
- Ⓘ Recommendation:
Wire Pulling Lubricant - LUB-I/0.95
from 3M™



■ UL 60320-1
CAN/CSA-C22.2 No. 60320-1



E



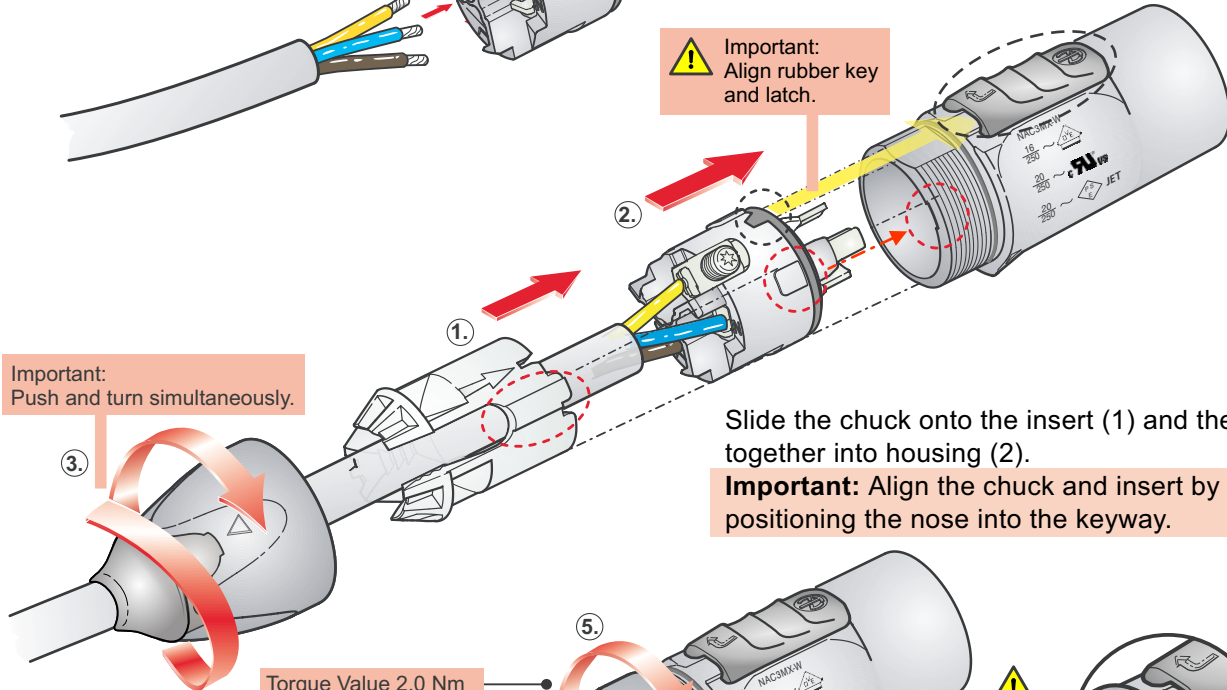
Torx size T8

Torque Value 0.7 Nm

Insert the wires into the terminals and fasten the screw with Torx size T8.

Wiring	VDE	UL
L →	brown	black
N →	blue	white
⏚ →	green / yellow	green

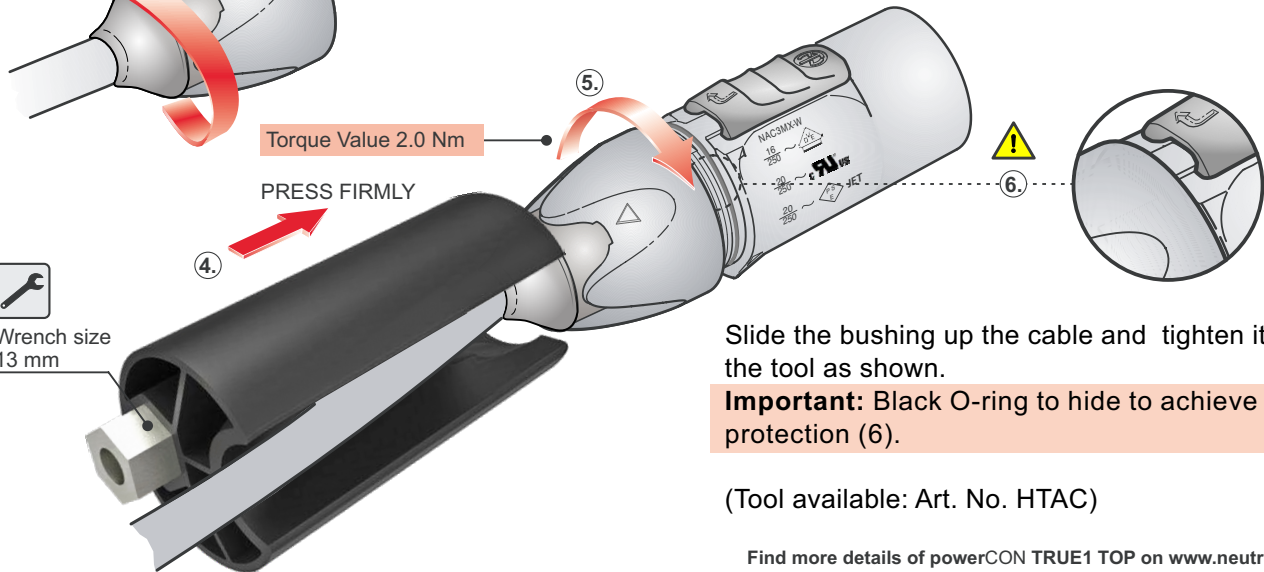
F



Slide the chuck onto the insert (1) and then both together into housing (2).

Important: Align the chuck and insert by positioning the nose into the keyway.

G



Slide the bushing up the cable and tighten it with the tool as shown.

Important: Black O-ring to hide to achieve IP protection (6).

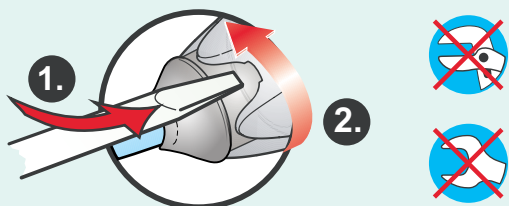
(Tool available: Art. No. HTAC)

Find more details of powerCON TRUE1 TOP on www.neutrik.com.

C FOR DISASSEMBLY

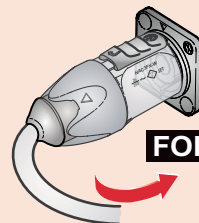
OPEN TWIST LOCK!

1. Press with screw driver to unlock
2. Turn bushing 360°.
3. Repeat step 1+2 until bushing is unscrewed.



D SAFETY INFORMATION

CAUTION



To ensure protection category, do not expose the connection to bending forces (e.g. do not attach loads to the cable, no free-dangling cable windings etc.).



SAFETY WARNING

For safety and certification reasons the connector must be replaced in case of any broken parts or excessive wear and tear.



Draft. Nr.: BDA 542 V4
Update: 2023-06-28

Neutrik AG | LI-9494 Schaan
www.neutrik.com

Data subject to change without prior notice. © 2023 NEUTRIK®. NEUTRIK®, powerCON are registered trademark of Neutrik AG. ALL RIGHTS RESERVED.