



PRODUCT MANUAL

powerCON® TRUE1®

NAC3F-TRUE1-CG

NAC3M-TRUE1-CG

1 APPLICATION & SAFETY INSTRUCTION

✓ IP 65, IP 66, & IP 67 RATED

APPLICATION:

- The powerCON® TRUE1® system is certified as appliance couplers with breaking capacity according to IEC 60320-1, EN IEC 60320-1, UL 60320-1, CSA C22.2 No. 60320-1.
- It serves to supply power to an appliance and from an appliance to other equipment.
- To be installed by qualified person only.
- Appliance couplers acc. to IEC 60320-1 are suitable to be used in cord sets and interconnection cord sets acc. to IEC 60799

POWER IN

APPLIANCE INLET
NAC3MPX-TOP
NAC3MPX-WOT-TOP
NAC3MPX-TRUE1



CONNECTOR
NAC3F-TRUE1-CG

POWER OUT

APPLIANCE OUTLET
NAC3FPX-TOP
NAC3FPX-WOT-TOP
NAC3FPX-ST-TOP
NAC3FPX-TRUE1



PLUG CONNECTOR
NAC3M-TRUE1-CG

POWER IN / POWER OUT ► Combination

APPLIANCE INLET / APPLIANCE OUTLET
NAC3PX-TOP
NAC3PX-TRUE1



CONNECTOR
NAC3F-TRUE1-CG

PLUG CONNECTOR
NAC3M-TRUE1-CG

Products are in compliance with:

IEC 60320-1
EN IEC 60320-1



UL 60320-1
CSA C22.2 No. 60320-1



Ratings:

16A 250V AC

Conductor cross section:

1.5 - 2.5 mm²

Cable diameter:

8 - 13 mm

20A 250V AC

14 - 12 AWG

0.31 - 0.51 inches

CABLE LIST

Approved cables:

3 x 1.5 mm²

3 x 2.5 mm²

■ H07RN-F

✓

✓

Approved cables:

14/3 AWG

12/3 AWG

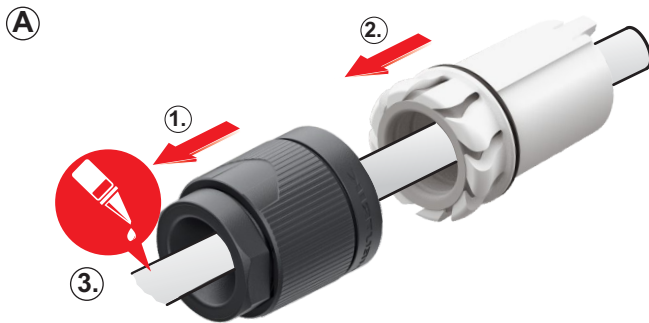
■ SJOOW

✓

✓



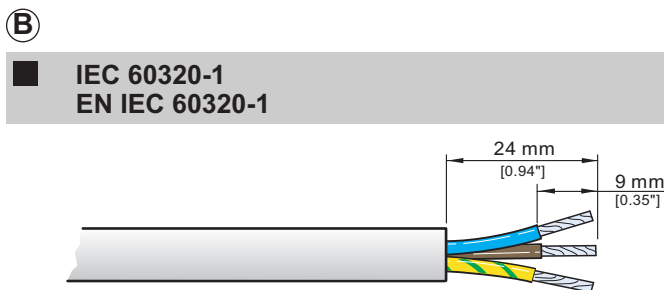
2 ASSEMBLY INFORMATION



Place the bushing (1) and chuck (2) over the cable.

Important: Chuck and Bushing cannot be placed over the cable after the assembly of the insert.

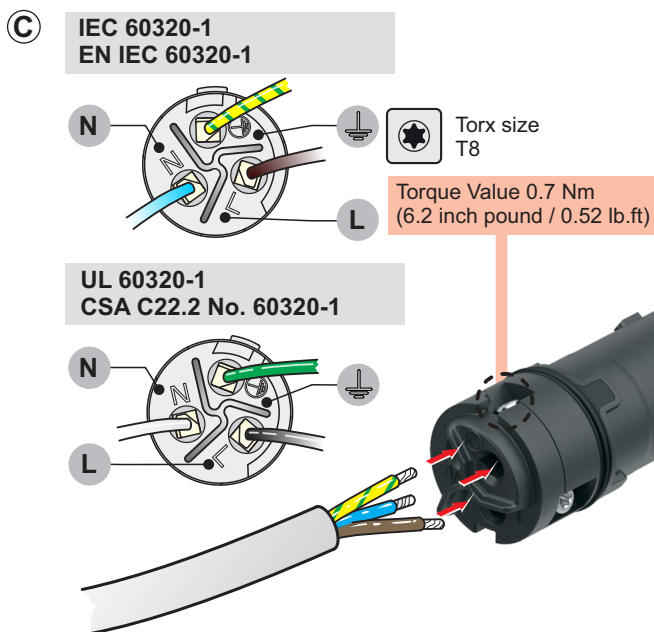
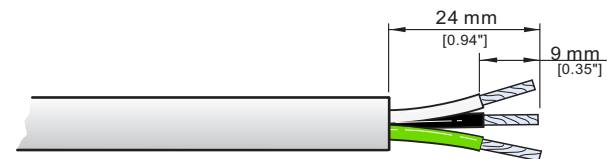
(3) For easier assembly please use a cable lubricante.



IEC 60320-1
EN IEC 60320-1

Prepare cable as shown.

UL 60320-1
CSA C22.2 No. 60320-1

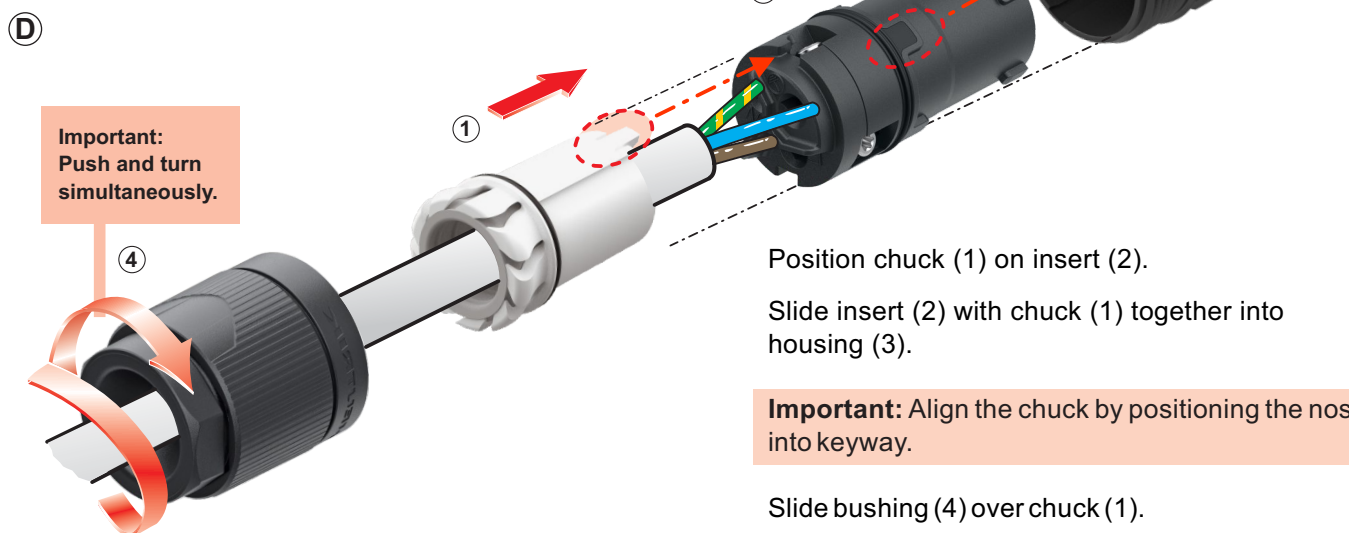


IEC 60320-1
EN IEC 60320-1

UL 60320-1
CSA C22.2 No. 60320-1

Slide the cable into the contacts and clamp with the screw with Torx size T8.

Typical Wiring	IEC 60320-1 EN IEC 60320-1	UL 60320-1 CSA C22.2 No. 60320-1
L ⇒	brown	black
N ⇒	blue	white
⊥ ⇒	green/yellow	green



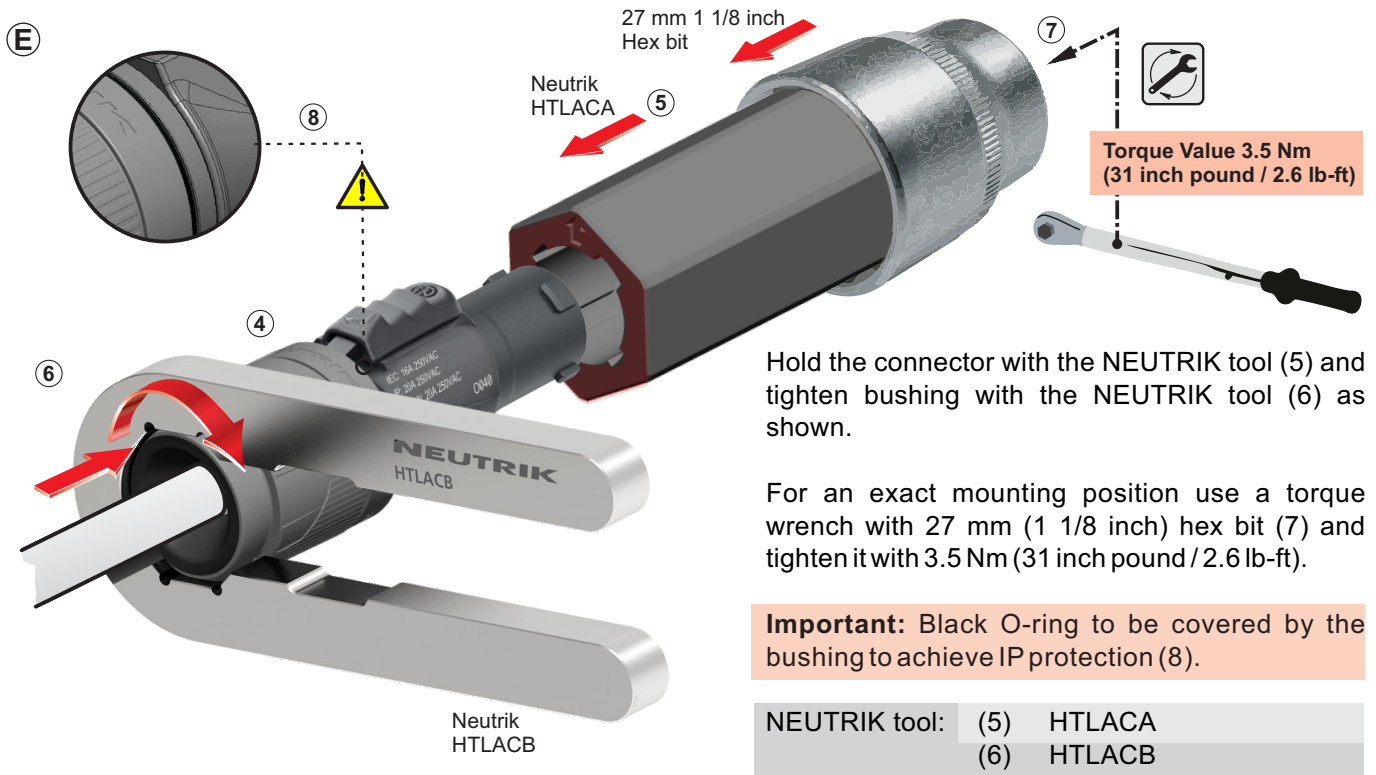
Important:
Push and turn
simultaneously.

Position chuck (1) on insert (2).

Slide insert (2) with chuck (1) together into housing (3).

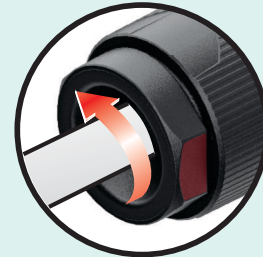
Important: Align the chuck by positioning the nose into keyway.

Slide bushing (4) over chuck (1).



3 FOR DISASSEMBLY

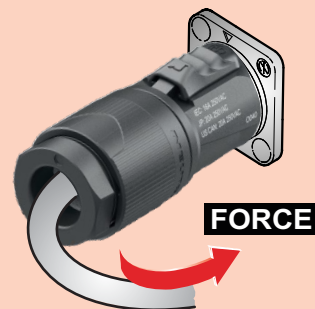
1. Use the Neutrik tool HTLACB.
2. Position the tool on the surfaces and open the clamping sleeve.



4 SAFETY INFORMATION

CAUTION

To ensure protection category, do not expose the connection to bending forces (e.g. do not attach loads to the cable, no free-dangling cable winding etc.).



SAFETY WARNING

For safety reasons the appliance couplers must be replaced in case of any broken parts or excessive wear and tear.



5 Application and Safety Instructions

A Assembly

- When assembling and processing the product, ensure the use of appropriate personal protective equipment.
- Neutrik components must only be assembled with designated and specified components.
- Replacement parts are suitable only when used in combination with the designated components. The product's characteristics are guaranteed only in the intended combination.
- The product must be protected from UV radiation if it is stored unassembled

B Application

- The product is exclusively intended for installation in electronic equipment or similar devices.
- The product is not intended for use in medical applications.
- The product is not intended for use in potentially explosive or flammable environments.
- Plug-in devices are not intended for use as climbing aids. Caution: Electrical hazards!
- Rated values are marked on the product and the smallest packaging unit.
- The product must be protected from contact with oils and coolants.
- Ensure that the connectors are either plugged in or protected against moisture with a suitable protective cap in potentially humid environments.

C Operation

- The safety of this product was evaluated according to standard specifications under laboratory conditions.
- Product safety in the intended application must be ensured by the respective party involved after mounting on a cable or similar or installation in an electronic device or similar.
- After installation in an electronic device or similar, the product safety in the intended application must be ensured by the respective party involved.
- Before plugging in, check the contact area for dry surfaces.
- Product surfaces may cause burns at elevated ambient temperatures. Ensure the use of appropriate protective equipment.
- The customer is responsible for the compliant use of the product as an appliance coupler in accordance with EN IEC 60320 and subsequently for the de-energized state of appliance sockets and appliance plugs when unplugged.
- Neutrik products and components may only be combined or assembled with Neutrik products and components intended for this purpose.
- The product is unsuitable for use by vulnerable consumers.
- Connectors and plug connectors complying with this part of IEC 60320-1, EN IEC 60320-1, UL 60320-1, CSA C22.2 No. 60320-1 are suitable for normal use at ambient temperatures not normally exceeding +40 °C, but their average over a period of 24 h does not exceed +35 °C, with a lower limit of the ambient air temperature of -5 °C.
- The product must be protected against mechanical shocks.
- The product must be checked regularly for suitability. The local maintenance regulations must be observed.

D Cleaning

- Clean only with dry and lint-free materials or compressed air.
- The product must not be cleaned while under load. The product may only be cleaned while it is not connected to any voltage and without the use of cleaning agents.

E Damages

- Handle products with care.
- In case of visible damages, check the suitability of the product for use.
- The disposal of this product must comply with all applicable local laws and regulations.





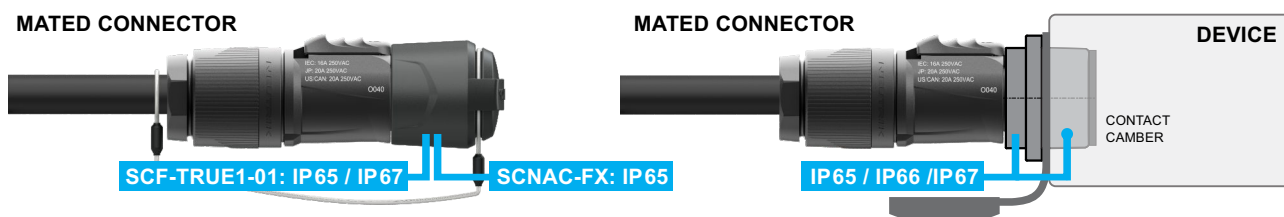
6 Compatibility information

- The products are suitable for use with the products listed below.
When used with other products, the suitability and safety must be assessed before commissioning and appropriate safety measures must be taken if necessary.

	NAC3F-TRUE1-CG	NAC3M-TRUE1-CG
NAC3FPX-TRUE1 NAC3FPX-TOP	Not applicable	Certified acc. to: UL 60320-1 EN IEC 60320-1
NAC3MPX-TRUE1 NAC3MPX-TOP	Certified acc. to: UL 60320-1 EN IEC 60320-1	Not applicable
NAC3PX-TOP	Certified acc. to: UL 60320-1 EN IEC 60320-1	Tested acc. to: UL 60320-1 EN IEC 60320-1

- Information about the intended combinations and their IP protection class.

	NAC3F-TRUE1-CG	NAC3M-TRUE1-CG
NAC3FPX-TRUE1	IP65 / IP66 / IP67	IP65 / IP66 / IP67
NAC3MPX-TRUE1	Not applicable	Not applicable
NAC3PX-TRUE1	IP65 / IP66 / IP67	IP65 / IP66 / IP67
NAC3FPX-TOP	IP65 / IP66 / IP67	IP65 / IP66 / IP67
NAC3MPX-TOP	Not applicable	Not applicable
NAC3PX-TOP	IP65 / IP66 / IP67	IP65 / IP66 / IP67



7 More Information on the website

<https://www.neutrik.com/en/products/audio/powercon>



Document No.: BDA 697 V5
Date: 2025-12-18

Neutrik AG | LI-9494 Schaan
www.neutrik.com

Data subject to change without prior notice. © 2025 NEUTRIK®. NEUTRIK®, powerCON are registered trademark of Neutrik AG.
ALL RIGHTS RESERVED.